

DEMR-AC3



特点

- 最大可直接接入100A, 或外接互感器
- 高精度设计, Class 0.5/Class C
- 支持正反向复费率计量
- Modbus RTU (RS485)
- 全面认证, CE, MID

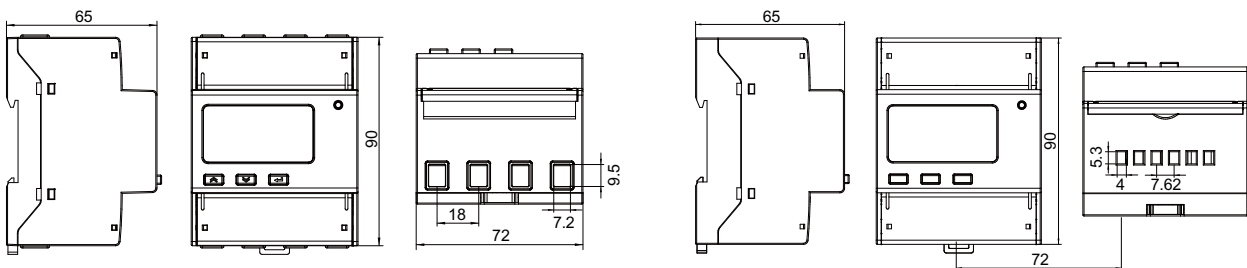
Features

- Max 100A direct connection or CT connection
- Accuracy of measuring Class 0.5/Class C
- Support Bi-directional metering of multi-rate
- Modbus RTU (RS485)
- Complete approval, CE, MID

规格参数 Specification

规格 Specification			三相四线 3 phase 4 wires		
			DEMR-AC3	DEMR-AC3-CT	
测量 Measure-ment	电压 Voltage	参比电压 Reference voltage	3×230/400V		
		电压范围 Voltage range	3×57.7/100V~3×276/478V		
		阻抗 Impedance	>2MΩ		
	电流 Current	输入电流 Input current	0.01-1(6)A (二次接入 Secondary access model)	0.1-10(80)A(直接接入 Direct access model) 0.1-10(100)A(直接接入 Direct access model)	
		功耗 Power consumption	<1VA(单路额定电流) <1VA(Single phase rated current)		
电网频率 Grid frequency	45/65Hz, 误差±0.5% 45/65Hz, Error ±0.5%				
计量 Metering	电能 Energy	Class A		0.1-10(80)A: Class C 0.1-10(100)A: Class B	
	时钟 Clock	≤0.5s/d			
通信 Communi-cation	接口与通信规约 Interface and communication	RS485: Modbus RTU			
环境 Environment	工作环境 Work environment	1室内 (如需在户外使用, 请为电表配备防水防尘表箱) Indoor (If it needs to be installed outdoors, please add a dustproof and waterproof shell)			
	工作温度 / 储存温度 Operating temperature / Storage temperature	-25°C~55°C / -40°C~70°C			
	相对湿度 Relative humidity	≤95% (无凝露) ≤95% (No condensation)			
	防护等级 IP Rating	IP51, 必须安装在合适的 IP 防护等级外壳中 IP51, Must be installed in a suitable IP rated enclosure			

产品尺寸图 Dimensional Drawing



DEMR-AC3

DEMR-AC3-CT