

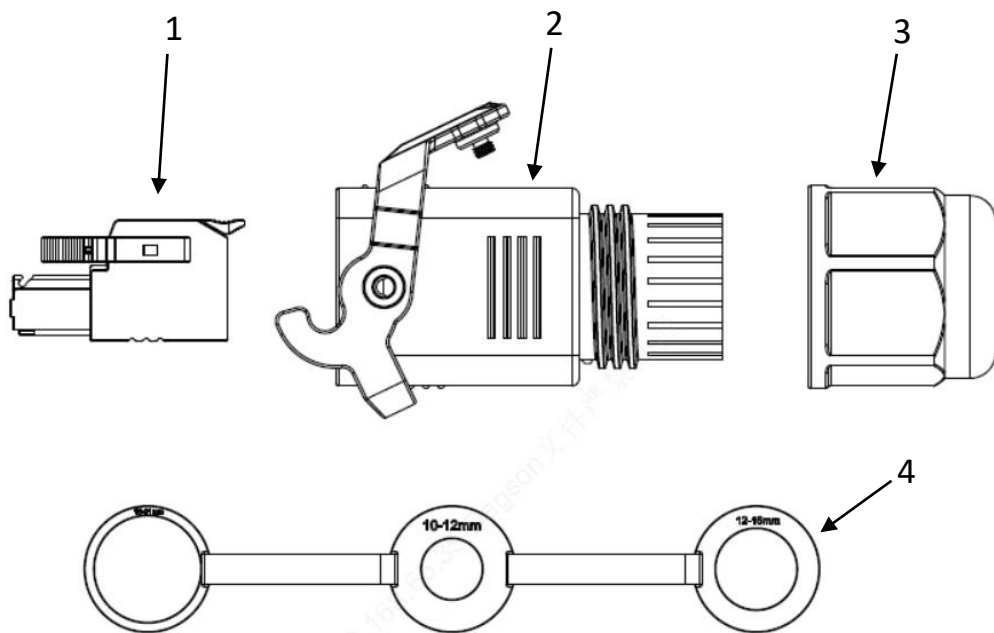
## 3 芯/5 芯 光伏连接器组装说明书

### 3-core / 5-core PV Connector Assembly Instruction

#### 第一部分：物料清单

#### Part1: Package contents

#### 插头 Plug



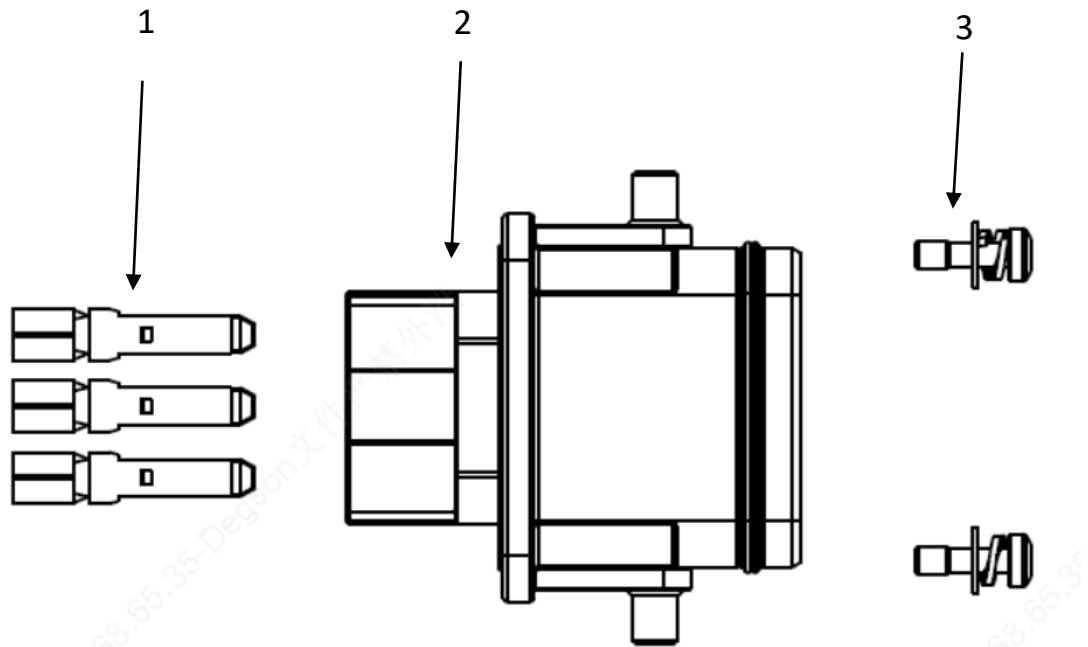
1: 插芯 Plug insert core

2: 插头外壳部件(含壳体,扳手,螺丝) Plug housing component(include housing & handle & screw)

3: 螺母 Nut

4: 防水圈 waterproof rings

插座 Socket



1: 插针 Contact pin

2: 插座壳体部件(含壳体,垫片,防水圈) Socket housing component(include housing & gasket & O-ring)

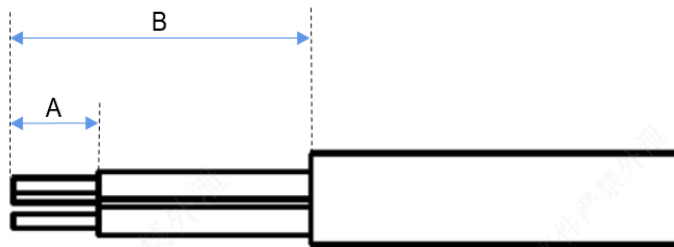
3: M3 螺丝 M3 screw

## 第二部分：插头组装说明

### Part2: Plug Assembly Instruction

#### 步骤 1：线材外被处理

#### Step 1: Strip off the jacket of the cable



型号	A	B	导体规格 (Conductor SPC)	线缆规格 (Cable spc)
PV-AC-P-03P-00Z (H)	12 ± 1mm	28 ± 2mm	4mm <sup>2</sup> & 6mm <sup>2</sup>	多股线/BVR, 单股线/so1
PV-AC-P-05P-00Z (H)	12 ± 1mm	38 ± 2mm	4mm <sup>2</sup> & 6mm <sup>2</sup>	多股线/BVR, 单股线/so1

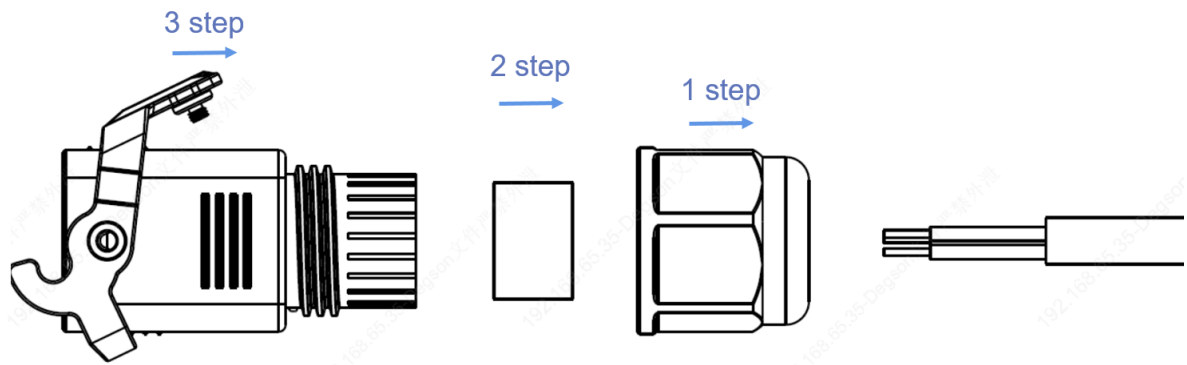
Note:选配:管型冷压头规格(Crimping Head SPC),

6mm<sup>2</sup>: PHOENIX 3201107/3200108/3200548

4mm<sup>2</sup>: PHOENIX 3200929/3200438

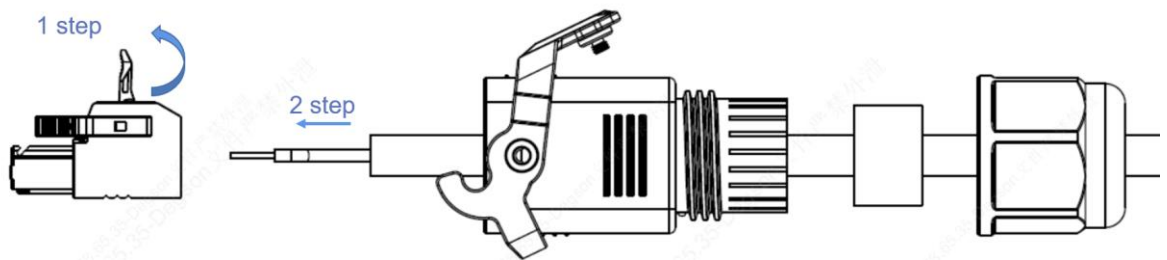
#### 步骤 2：零件预穿线组装(各零件依照图示步骤)

Step 2: Pre threading assembly of parts (The parts follow the steps shown in the diagram)



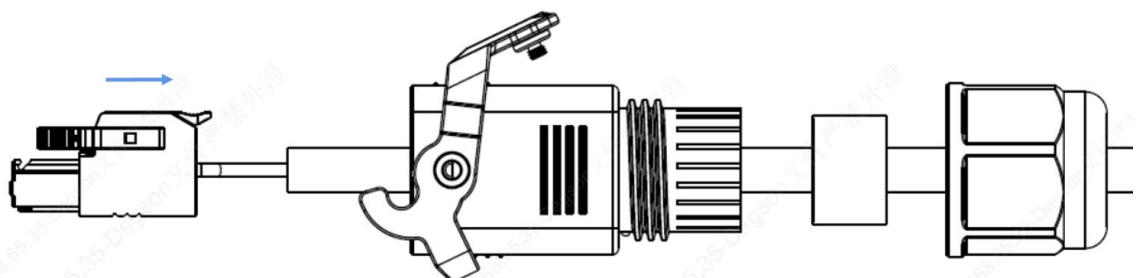
步骤 3：插芯组装线缆

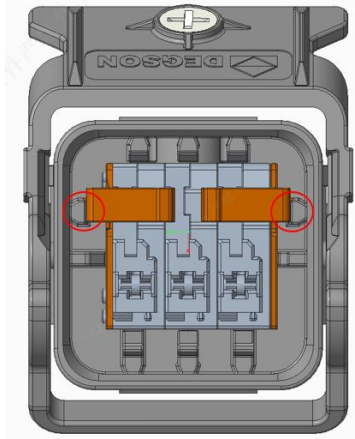
Step 3: Plug insert core assembly cable



步骤 4：插芯组装进外壳部件

Step4: Plug insert core assembly housing component



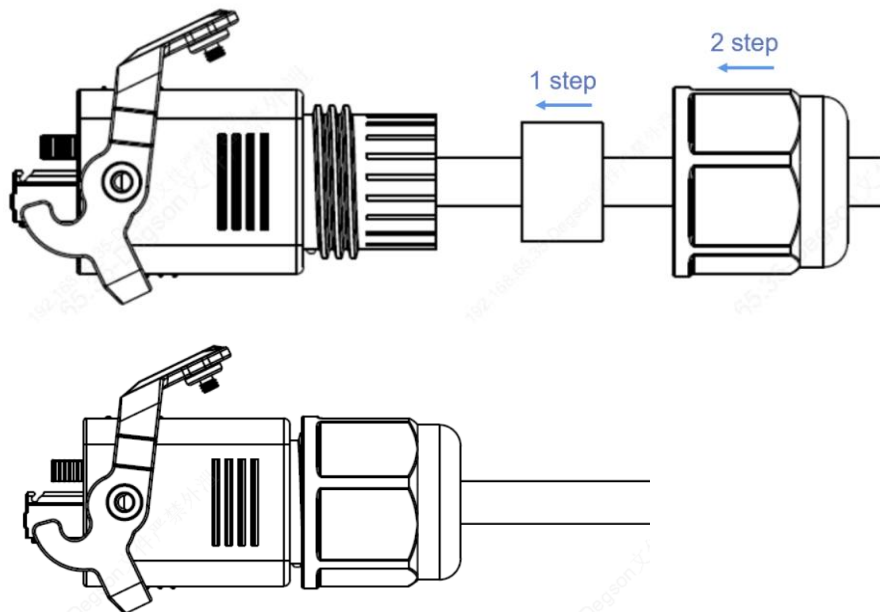


注意：插芯组装到位，有清晰咔哒声，目视卡扣锁到位

Attention: The plug is assembled in place with a clear clicking sound, and the buckle lock is visually in place

步骤 5： 组装防水圈&螺母

Step 5: Assembly waterproof rings & Nut



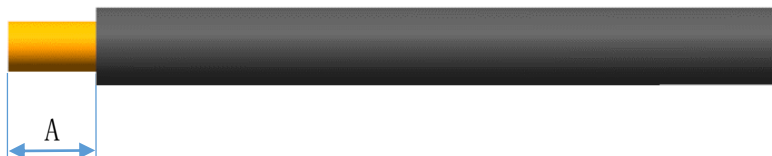
建议螺母锁紧扭力： 2.0~2.5 N·M

### 第三部分：插座组装说明

#### Part2: Socket Assembly Instruction

##### 步骤 1: 线材外被处理

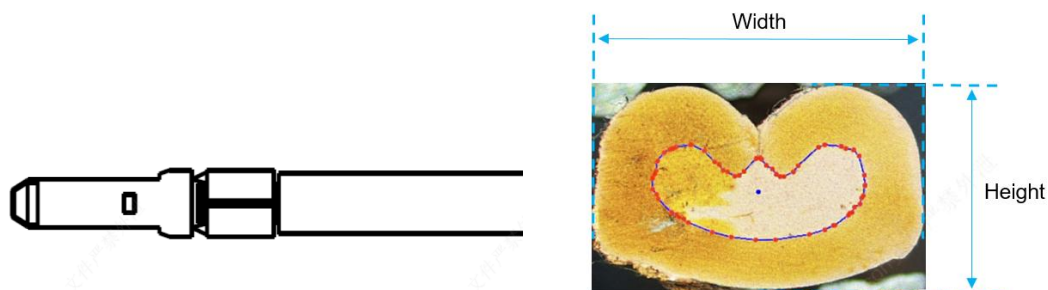
##### Step 1: Strip off the jacket of the cable



型号	A	导体规格 (Conductor SPC)	线缆规格 (Cable SPC)
PV-AC-S-03P-00Z (H)	8 ± 1mm	4mm <sup>2</sup> & 6mm <sup>2</sup>	多股线/BVR
PV-AC-S-05P-00Z (H)	8 ± 1mm	4mm <sup>2</sup> & 6mm <sup>2</sup>	多股线/BVR

##### 步骤 2: Pin 铆压线缆

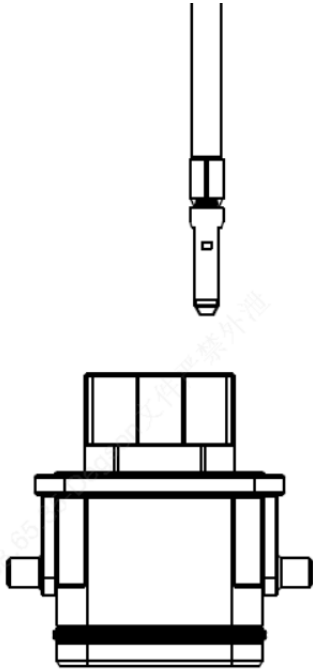
##### Step2: Crimp pin



Pin 压接尺寸 (Crimp Dimension)	线缆规格 (mm <sup>2</sup> ) (Cable SPC)	压接形式 (Crimp Type)	压接高度 (mm) (Height)	压接宽度 (mm) (Width)
	4	B 型	3.50 ± 0.05	6.15 ± 0.05
	6	B 型	3.85 ± 0.05	6.20 ± 0.05

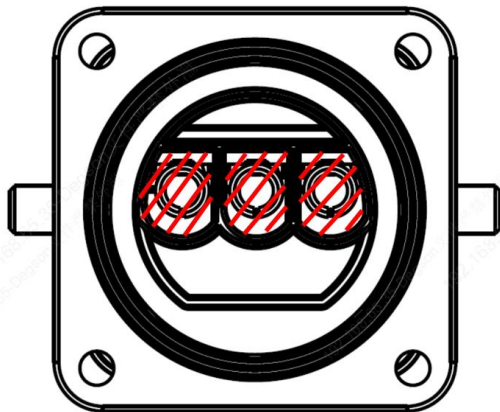
步骤 3: 组装插针

Step3: Assembly Pin



步骤 4: 灌胶(红色区域)

Step 4: Glue filling in the red area

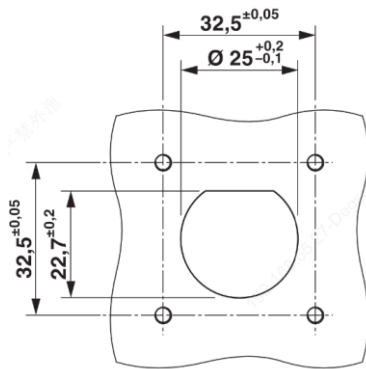


### 第三部分：其他说明

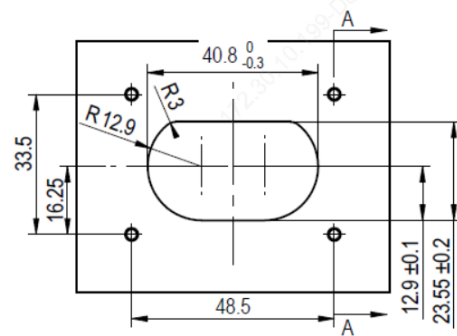
#### Part3: Other Instruction

##### 1、插座面板开孔尺寸

##### 1. The hole size of panel



三芯开板尺寸



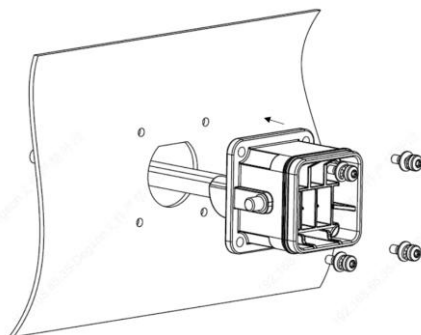
五芯开板尺寸

##### 2、安装步骤

##### 2. Installation steps

##### 1,插座前安装于设备面板

##### 1. Install the socket in front of the equipment panel

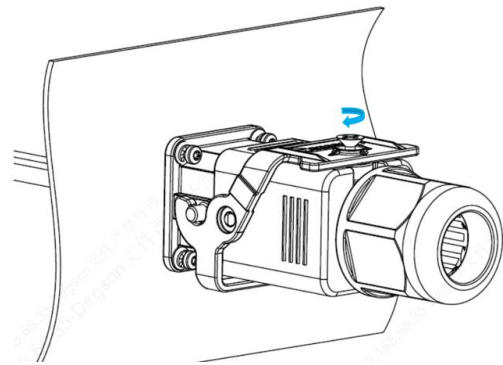
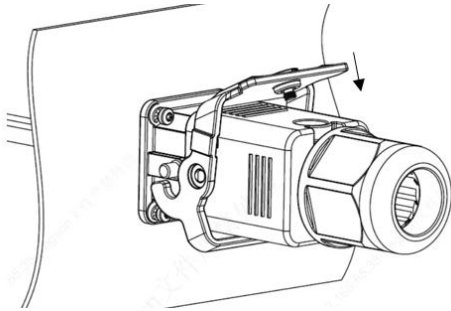
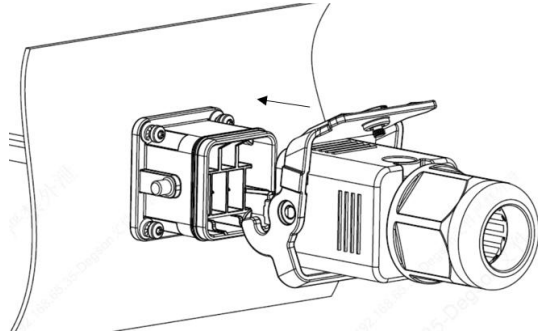


推荐 M3 固定螺丝锁紧扭力：0.5~0.6 N·M

Recommended tightening torque for M3 fixing screws: 0.5~0.6 N·M

2, 插头对配设备插座

2. Plug matching device socket



推荐 M4 固定螺丝锁紧扭力: 0.8~1.0 N·M

### 3、安全说明

#### 3. Safety notes

##### 光伏连接器

连接器只能配套使用，仅用于室内。

安全说明：

- 1、仅允许合格的电气专业人员安装和操作产品。
- 2、在负载情况下不得断开连接器。
- 3、产品只能在有过电压保护装置的场合使用。



警告：烫伤风险

连接器会在运行过程中发热。在一定环境条件下，最高温度可达到 115℃。在这种情况下，用户有责任安装警告牌。

Power-storage connector



The connector can only be used in combination, for indoor use only.