

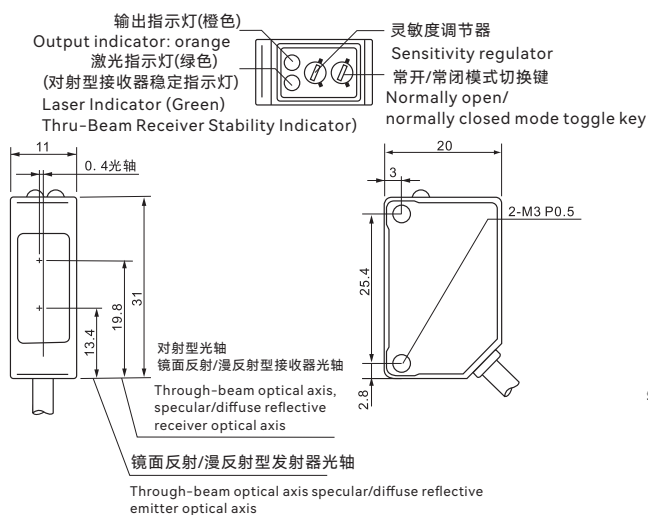
DEL C系列 DELC Series



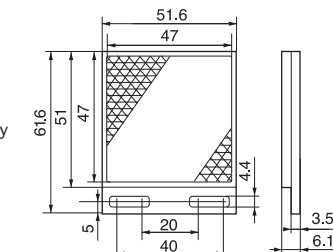
型号 Model			
NPN	DELC-TM30N	DELC-RM10N	DELE-D40N
PNP	DELC-TM30P	DELC-RM10P	DELE-D40P
基本特点 Basic Features			
工作原理 Working principle	光电传感器 Photoelectric Sensors		
外壳样式 Enclosure style	方型 Square		
光学工作原理 How optics work	漫反射 Reflection	回归反射型 Regressive reflective type	漫反射 Reflection
检测距离 Detection distance	3000mm	1000mm	400mm
光斑尺寸 Spot size	Ø30.0mm/30m	Ø10.0mm/00m	Ø2.0mm/0.40m
检测物 Detection	Ø2mm	Ø2mm	/
光源 Light source	红色激光650nm,Class 1	红色激光650nm,Class 2	
指示灯 Light	输出功能: 橙色 LED, 运行状态: 绿色 LED Output function: orange LED, operating status: green LED		
灵敏性调节 Sensitivity regulation	单圈电位器 Singleturn potentiometer		
电气数据 Electrical Data			
开关模式 Switch mode	Light.on (入光动作) / D.on (遮光动作) 可切换 Light.on (Light Action) / D.on (shading action) Switchable		
输出模式 Output mode	NPN或PNP集电极开路 NPN or PNP open collector		
响应时间 Response time	0.25ms		
开关频率 Switching frequency	8kHz		
重复精度 Repeatability	/		≤5%
迟滞 (回差/应差) Hysteresis (Return/Response)	/		≤20%
工作电压 Operating voltage	12~24V DC±10%		
消耗电流 Current consumption	发射端≤30mA, 接收端≤30mA	≤20mA	
残余电压 Residual voltage	≤2.0V (100mA)	≤1.5V (100mA)	
负载电流 Load current	≤100mA (24VDC)		
绝缘电阻 Insulation resistance	电源端子与外壳之间≥50MΩ (500VDC)	50MΩ (500VDC) ≥ between power terminal and housing	
耐压 Resistance	1000VAC (50/60Hz), 1 分钟电源端子和外壳之间	1000VAC (50/60Hz), 1 minute between power terminal and housing	
保护电路 Protection circuits	短路保护/反极性保护 Power supply reverse polarity protection/short circuit protection		
环境条件 Environmental Conditions			
工作环境温度 Operating ambient temperature	-10~50℃ (无冻结) -10~50℃ (no freezing)		
储存温度 Storage temperature	-10~70℃ (不结冰) -10~70℃ (non-icing)		
工作环境湿度Humidity of the working environment	35~85%RH (无凝露) 35~85%RH (no condensation)		
储存湿度 Store humidity	35~95%RH (无凝露) 35~95%RH (no condensation)		
环境照度 Ambient illumination	白炽灯≤3000 Lux; LED灯≤1000 Lux; 太阳光-/≤10000 Lux Incandescent lamp ≤ 3000 Lux; LED lamp ≤ 1000 Lux; Sunlight ≤ 10000 Lux		
抗振性 Anti-vibration	10~50Hz, 1.5mm 振幅, X、Y、Z 三个方向各2h	10~55Hz sweep, 1.5mm amplitude, XYZ 3 directions for 2 hours each	
防护等级 Ingress protection	IP67		
机械数据 Mechanical Data			
最大拧紧扭矩 Maximum tightening torque	/		
连接方式 Connection	2m/3芯电缆 2m/3 core cable		
尺寸 (宽x高x深) Size	11.0x31.0x20.0mm		
材料 Material	/		
重量 Weight	0.092kg	0.049kg	
配件 Fittings	支架、螺丝 Brackets, screws		

DEL系列 DELC Series

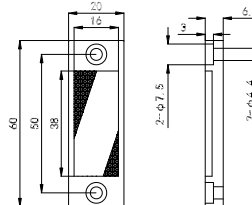
尺寸规格 Dimensions



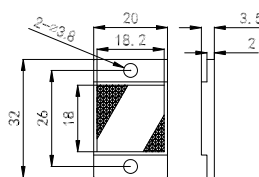
ELC-RM10N/P反光板: ELC-RM10N/P Reflectors



(标配 DR-13) DR-13 is standard



(选配 DR-14) DR-14 is standard



(选配 TD-15) DR-15 is standard

单位: mm
Unit: mm

接线示意图 Wiring Diagram

